

selkirk flood protection scheme



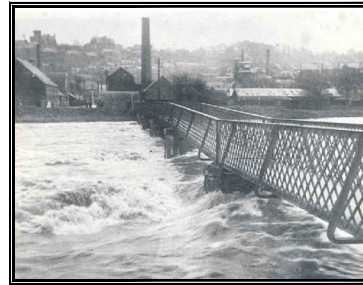
Historical Photos and Flooding



Selkirk Cauld
(1898)
(following a flood event)



Old Bannerfield Pedestrian Bridge
(1903)



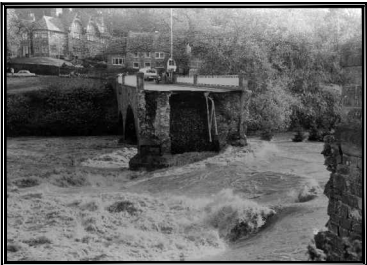
Ettrick Water
(1926)



Selkirk Cauld
(1926)
(removed just before bridge collapsed in 1977)



Ettrick Water
(1932)
(significant erosion during a flood event)



Selkirk Bridge
(1977)



Ettrick Water
(1977)



Ettrick Water
(1977)



Rugby Club
(2003)



Rugby Club
(2004)



A708 Moffat Road
(2003/4)



Philiphaugh Farm Cottages
(2003)
(during a flood event)



Philiphaugh Farm Cottages
(June 2009)
(no flow)



Ettrick Water near Murray's Cauld
(Nov 2009)
(during high flows)



Ettrick Water
(Nov 2009)
(during high flows)